

NOTES:

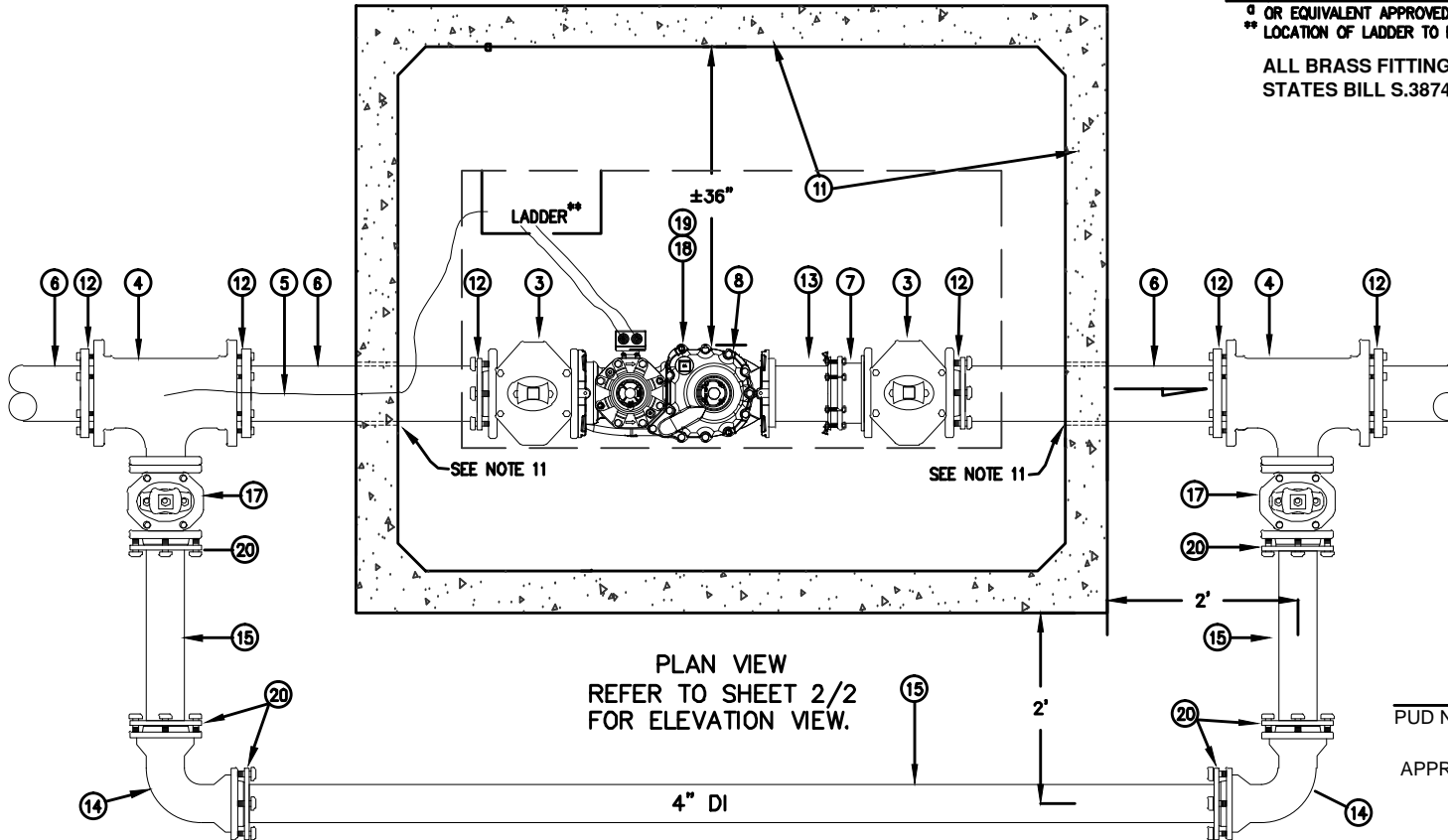
1. SET VALVE BOX AND VAULT TO FINISH GRADE. SEE P.U.D. VALVE BOX DETAIL.
2. SEAL VAULT LIDS AND RISERS OF VAULT WITH 1-1/2"x1" JOINT MASTIC. INSTALL 3" PVC PIPE TO DRAIN TO DAYLIGHT IF POSSIBLE.
3. INSTALL SERVICE PIPE PERPENDICULAR TO MAIN OR AS SHOWN ON WATER PLANS APPROVED BY DISTRICT ENGINEER. USE ELLS, AS NECESSARY, TO MEET ELEVATION OF VAULT.
4. TEE, VALVE AND PIPE MUST BE WRAPPED WITH 8 MIL POLYETHYLENE PIPE ENCASEMENT. IT IS TO BE INSTALLED AS PER D.I.P.R.A. AND IN ACCORDANCE WITH A.W.W.A. C105.
5. BLOCK TEE/TAPPING SLEEVE WITH POURED CONCRETE ON ALL WATER MAINS OTHER THAN DUCTILE IRON. IN ADDITION, THE SERVICE PIPE FROM VALVE AT MAIN TO METER AND THE PRIVATE SERVICE LINE FROM METER ON TO PRIVATE PROPERTY SHALL BE RESTRAINED USING MEG-A-LUGS OR "FIELD LOK" GASKETS (OR APPROVED EQUIVALENT). THE LENGTH OF RESTRAINED PIPE ON PRIVATE PROPERTY SHALL BE DETERMINED BY THE DEVELOPER ENGINEER.
6. SET VAULT ON MIN. 6" OF 3/4" MINUS CRUSHED GRAVEL, MECHANICALLY TAMPED TO 95% COMPACTION.
7. FLUSH OUT PIPELINE BEFORE INSTALLING METER. DO NOT ALLOW ANY MUD OR FOREIGN MATERIAL TO ENTER PIPE OR FITTINGS.
8. IF CONNECTION IS NOT COMPLETED TO CUSTOMER'S PIPE, INSTALL M.J., TAP 2", CAP OVER OPEN END OF PIPE AND FLUSH OUT PIPE AND METER. MAKE WATER TIGHT.
9. METER SENSING PAD IS TO BE LOCATED WITHIN 6" OF HINGE ON VAULT LID AT STREET (INLET) END OF VAULT.
10. 4-INCH VALVES SHALL BE A.W.W.A. C509 STANDARD, "O" RING PACKING, NON-RISING STEM, 2" OPERATING NUT, RESILIENT WEDGE, GATE VALVES.
11. NON-SHRINK GROUT/FOAM AROUND PIPE. MAKE WATER TIGHT.
12. BACKFILL AROUND VAULT SHALL BE FIRMLY TAMPED TO ELIMINATE SETTLEMENT.
13. CONCRETE BLOCK OR EQUIVALENT UNDER VALVE IS TO KEEP VALVE FACE VERTICAL DURING INSTALLATION.
14. A SHUTOFF VALVE SHALL BE INSTALLED ON CUSTOMER'S PLUMBING AFTER DISTRICT'S METER, PER U.P.C. SUCH VALVE SHALL BE ACCESSIBLE AT ALL TIMES.

BILL OF MATERIALS

NO.	NOMENCLATURE	REQ'D.
1	WATER MAIN	
2	TEE, MAINLINE 6" FL OR STAINLESS STEEL TAPPING SLEEVE EQUIVALENT	1
3	VALVE, 6" DUCTILE IRON, RESILIENT WEDGE, FLxMJ	3
4	TEE, 6" M.J. 4" FL	2
5	WIRE, #10 SOLID COPPER, BLUE COATED, EXTEND TO TOP OF LADDER	
6	PIPE, 6" CL 50 DUCTILE IRON (FIELD CUT TO LENGTH)	
7	RESTRAINED FLANGE COUPLING ADAPTER, 6" ROMAC IND. INC. ^o	1
8	METER, BADGER, 6" RECORDALL COMPOUND SERIES METER WITH SUMMATOR SPLITTER WITH ORION RTR TRANSMITTER	1
9	CASING, 6" PVC SEWER PIPE	3
10	UTILITY VAULT 675LA W/#675-TL-2-332P COVER (SPRING ^o ASSISTED) AND LADDER (BILCO LADDER-UP SAFETY POST) ^{o**}	1
11	VALVE BOX, CAST IRON OLYMPIC FOUNDRY VB-007-SKAGIT (SEE P.U.D. DETAIL)	3
12	RETAINER GLAND, 6" ROMAC GRIP RING ^o	6
13	SPOOL, 6" CL 50 D.I., FLxPE, 12" MIN. LONG (FIELD CUT TO LENGTH)	1
14	ELL, 4" M.J. 90°	2
15	PIPE, 4" CL52 DI (FIELD CUT TO LENGTH)	
16	PIPE SUPPORT (MATERIAL RESOURCES #S92 OR S89)	2
17	VALVE, 4" FLxMJ GATE, RW	2
18	NIPPLE, 2"x4", BRASS	1
19	VALVE, 2" BALL, BRASS, PTxPT, WITH PADLOCK WINGS (FORD B11-777-W) ^o	1
20	RETAINER GLAND, 4" ROMAC GRIP RING ^o	6
21	PLUG, 2" BRASS	1

^o OR EQUIVALENT APPROVED BY THE DISTRICT
^{**} LOCATION OF LADDER TO BE DETERMINED AT INSTALLATION BY PUD REPRESENTATIVE.

ALL BRASS FITTINGS TO BE LEAD FREE DOMESTIC BRASS PER UNITED STATES BILL S.3874



PLAN VIEW
 REFER TO SHEET 2/2
 FOR ELEVATION VIEW.

[Signature]
 PUD NO. 1 OF SKAGIT COUNTY ENGINEERING MANAGER

APPROVED ON: MAY 16, 2014



**STANDARD INSTALLATION OF
 6" COMPOUND METERED SERVICE
 PLAN VIEW**

SHEET 1/2

SCALE: 1" = 2'
DATE: 5-7-07
REVISED: 5/16/14
DRAWN BY: CAS
APPROVED BY: GJS

STANDARD

WS6-1a