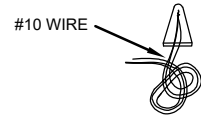
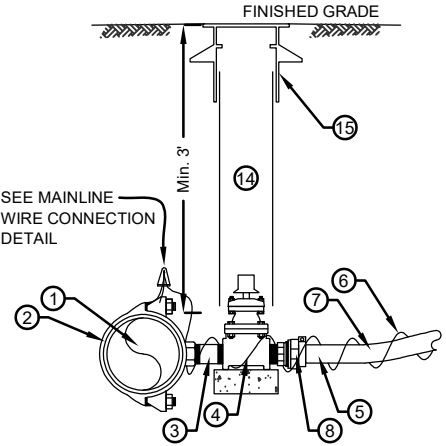
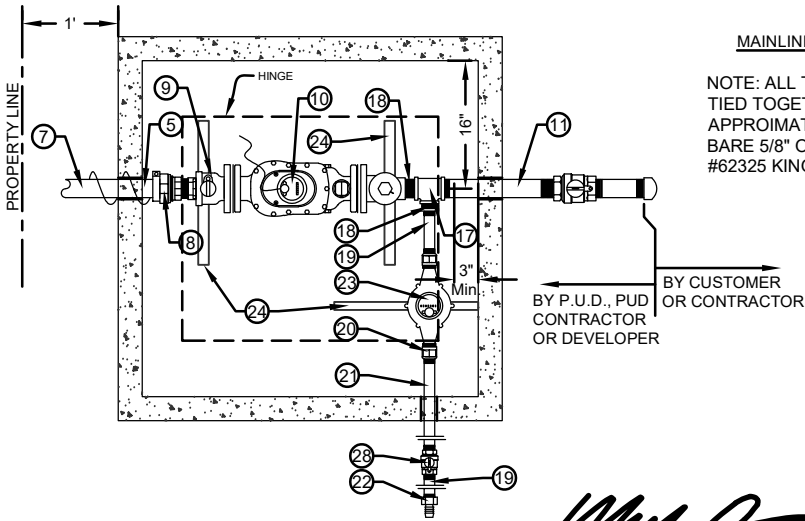
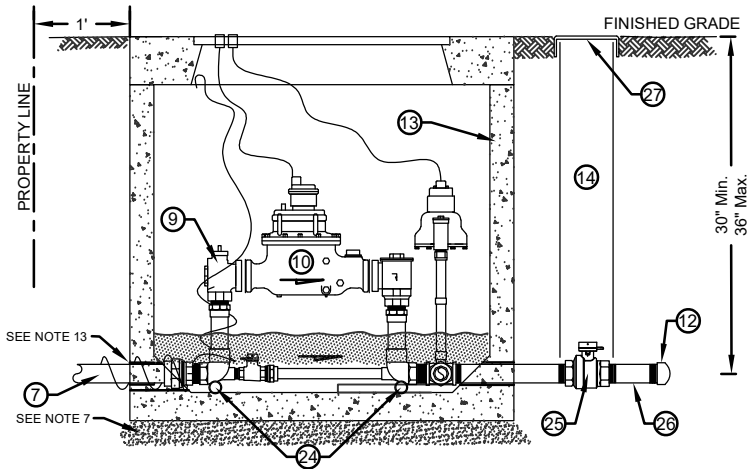


BILL OF MATERIALS					
NO.	NOMENCLATURE	REQ'D	NO.	NOMENCLATURE	REQ'D
1.	WATER MAIN		14.	CASING, 6" PVC SEWER PIPE	1
2.	CLAMP, SERVICE, DOUBLE STRAP x 2" I.P.T., ALL BRASS (FORD #202B) ^a	1	15.	VALVE BOX, CAST IRON OLYMPIC FOUNDRY VB-007-SKAGIT(SEE P.U.D. DETAIL)	1
3.	NIPPLE, BRASS 2"x4"	1	16.	NIPPLE, BRASS 1-1/2"xCLOSE	1
4.	VALVE, 2" DUCTILE IRON, RESILIENT WEDGE, I.P.T. x I.P.T.	1	17.	TEE, 2" BRASS	1
5.	INSERT, STIFFENER, 1-1/2" (FORD #74) ^a	2	18.	BUSHING, BRASS 2"x1", M.I.P.T. x F.I.P.T.	1
6.	WIRE, #10 SOLID COPPER, BLUE COATED, EXTEND MIN. 18" INTO BOX, NEAR LID.		19.	NIPPLE, BRASS 1"x6"	2
7.	PIPE, 2" REHAU MUNICIPLEX TYPE A, 200 P.S.I.		20.	COPPERSETTER, 3/4" (FORD #VBHC72-9W-11-44-NL FP) ^a OR 1" (VBHC74-12W-11-44-NL FP) ^a	1
8.	BRASS PAC JOINT, 2" M.I.P.T. x 2" COP (FORD #C84-77-NL) ^a	2	21.	NIPPLE, BRASS 1"x18"	1
9.	COPPERSETTER, 2", (FORD #VBHH77-12B-11-77-NL FP) ^a	1	22.	ADAPTER, BRASS 1" F.I.P.T. x 1" INSERT	1
10.	METER, BADGER, MODEL M170 2" BRONZE METER(BY PUD)	1	23.	METER, BADGER, MODEL M25 (5/8"), M35 (3/4") OR M70 (1")(BY PUD)	1
11.	NIPPLE, BRASS 2"x12"	2	24.	STABILIZER, 1/6" TO 24" LENGTH ROD OR PIPE	1
12.	CAP, 2" GALVANIZED	1	25.	BALL VALVE, BRASS 2" (FORD B11-777R-NL) ^a	2
13.	VAULT, OLDCASTLE 444-LA W/COVER 332-DP-SA(SPRING ASSISTED) ^a	1	26.	NIPPLE, BRASS 2"x6"	1
			27.	6" PVC CAP	2
			28.	BALL VALVE, BRASS 1" (FORD B11-444R-NL) ^a	1

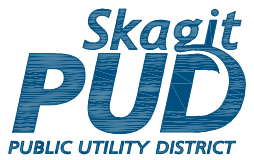
^a OR EQUIVALENT APPROVED BY THE DISTRICT
^b ELL, 90° STREET, 1" M X F.I.P.T. (IF NEEDED)

ALL BRASS FITTINGS TO BE LEAD FREE DOMESTIC BRASS



MAINLINE WIRE CONNECTION DETAIL
 NTS
 NOTE: ALL THREE WIRES ARE TO BE TIED TOGETHER IN AN OVERHAND KNOT APPROXIMATELY 6" FROM WIRE NUT. BARE 5/8" OF WIRES. CONNECT WITH #62325 KING WATERPROOF WIRE CONNECTOR.^a

[Signature]
 PUD NO. 1 OF SKAGIT COUNTY ENGINEERING MANAGER
 APPROVED ON: _____ SEPTEMBER 9 _____, 2022



**STANDARD INSTALLATION OF
 2" METERED SERVICE
 WITH 200 P.S.I. REHAU
 SERVICE LINE WITH 5/8", 3/4", OR 1" DEDUCT METER**

SCALE: 1" = 2'
 DATE: 3/25/05
 REVISED: 12/8/22
 DRAWN BY: JLB
 APPROVED BY: MCH

STANDARD
WS2-2a