

FIBER OPTIC CAMPUS TO WTP: BNSF RR CROSSING

ISSUED FOR BIDDING
MOUNT VERNON, SKAGIT COUNTY, WA
CP19390
JULY 2, 2024



**PUBLIC UTILITY DISTRICT
NO. 1 OF SKAGIT COUNTY**

DISTRICT OFFICIALS

JOE LINDQUIST	PRESIDENT
ANDREW MILLER	VICE PRESIDENT
CORRIN HAMBURG	SECRETARY
GEORGE SIDHU, P.E.	GENERAL MANAGER
MARK C. HANDZLIK, P.E.	ENGINEERING MANAGER
MICHAEL FOX	OPERATIONS MANAGER

UTILITY CONTACTS

CASCADE NATURAL GAS 1520 SOUTH 2nd STREET MOUNT VERNON, WA 98273 CONTACT: JAMES HOBBS TEL: (360) 336-3876	FRONTIER COMMUNICATION 595 PEASE ROAD BURLINGTON, WA 98233 CONTACT: BRET MURDOCK TEL: (360) 707-0641
COMCAST XFINITY 400 SEQUOIA DRIVE BELLINGHAM, WA 98226 CONTACT: CASEY JONES TEL: (360) 527-8243	ATT FIBER OPTICS C/O SIENA ENGINEERING GROUP, INC. 11241 WILLOW RD NE, SUITE 130 REDMOND, WA 98052 CONTACT: LOUIE VAN HOLLEBEKE TEL: (425) 896-9850
PUGET SOUND ENERGY PO BOX 90868 - MAIL STOP BOT01G BELLEVUE, WA 98009-0868 CONTACT: CUSTOMER CONSTRUCTION SERVICES TEL: (888) 321-7779	

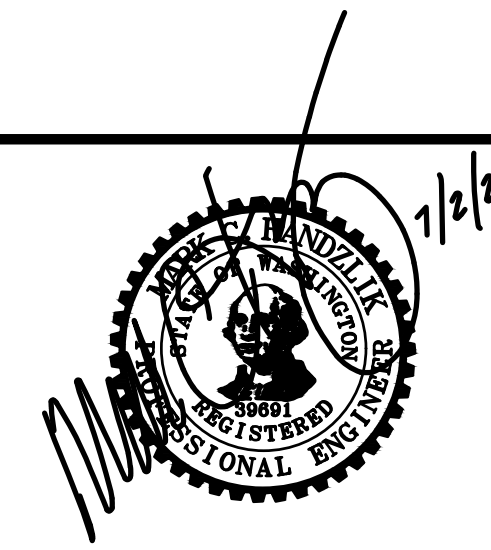
DRAWING INDEX

- COVER
- 1. LEGEND
- 2. BMP AND STORM DETAILS
- 3. PLAN & PROFILE : STA -1+25 TO STA 2+00
- 4. TRAFFIC CONTROL PLAN



VICINITY MAP 
NOT TO SCALE

ISSUE	REVISIONS	BY	DATE
1.	ISSUED FOR BIDDING	MCH	6/28/24



DATUM: HOR: NAD 83 VERT: NAVD 88	DSGN BY: JLB DWN BY: JLB APPVD BY: MCH
DATE PRINTED: 6/28/24	SEC: 17.18 TWP: 34 N RGE: 4 E



PUBLIC UTILITY DISTRICT
NO. 1 of SKAGIT COUNTY
1415 Freeway Drive
P.O BOX 1436
Mount Vernon, WA 98273
(360) 424-7104
www.SkagitPud.org

FIBER OPTIC CAMPUS TO WTP:
BNSF RR CROSSING
COVER

SCALE: NONE	JOB ID : CP19390	SHEET: COVER
-------------	------------------	-----------------

SURVEY SYMBOLS

Table with columns: SYMBOL, DESCRIPTION, BLOCK, LAYER. Includes symbols for MONUMENT, REBAR & CAP, SOIL BORING, SOIL TEST PIT, UTILITY POTHOLE/ GROUND WATER MONITORING WELL.

SURFACE FEATURE SYMBOLS

Table with columns: SYMBOL, DESCRIPTION, BLOCK, LAYER. Includes symbols for METAL SIGN POST, WOOD SIGN POST, GATE POST, CONIFEROUS TREE, DECIDUOUS TREE, BUSH/SHRUB, STUMP.

UTILITY SYMBOLS

Table with columns: SYMBOL, DESCRIPTION, BLOCK, LAYER. Includes symbols for SANITARY SEWER MANHOLE, STORM DRAIN MANHOLE, CATCH BASIN, INLET/YARD DRAIN, GAS VALVE, GAS METER, TRAFFIC JUNCTION BOX, ELEC. JUNCTION BOX, POWER METER, TELECOM. JUNCTION BOX, CABLE TV JUNCTION BOX, JUNCTION BOX, TELEPHONE RISER, UTILITY POLE, UTILITY POLE W/CONDUIT, GUY ANCHOR, GUY POLE, TRANSFORMER, POWER VAULT, TRANSMISSION TOWER, TELEPHONE VAULT, PEDESTRIAN SIGNAL HEAD, PEDESTRIAN SIGNAL BUTTON, TRAFFIC SIGNAL POLE W/LIGHT, LUMINAIRE, YARD LIGHT, MONITORING WELL, WATER MANHOLE, SPRINKLER HEAD, IRRIGATION BOX.

WATER SYMBOLS

Table with columns: SYMBOL, DESCRIPTION, BLOCK, LAYER. Includes symbols for EXIST., PROP., FIRE HYDRANTS (2 NOZZLE, 3 NOZZLE), JOINTS (FLANGE/BLIND FL, MECHANICAL, PUSH-ON/HUB, THREAD), VALVES (AIR RELIEF VALVE, BLOW-OFF VALVE, BUTTERFLY VALVE, CHECK VALVE, GATE VALVE, PLUG VALVE), ELBOWS (90° ELBOW, 45° ELBOW, 22.5° ELBOW, 11.25° ELBOW, CROSS, TEE, VERTICAL ELBOW, 45° ELBOW, 22.5 ELBOW, 11.25° ELBOW, CROSS, TEE, CROSS, TEE, VERTICAL, TAPPING SLEEVE).

NOTATION SYMBOLS

Table with columns: SYMBOL, DESCRIPTION, BLOCK, LAYER. Includes symbols for CATHODIC PROTECTION TEST STATION, CHANGE IN PIPING MATERIAL, TRENCH BACKFILL AND SURFACE RESTORATION CODE, CONSTRUCTION NOTE, TEXT (ROAD STATIONING, PARCEL NUMBER, ADDRESS, WATERLINE LABEL).

LINE TYPES

Table with columns: LINETYPE, DESCRIPTION, LAYER. Includes line types for GAS, IRRIGATION, STORM DRAIN, EXISTING CULVERT, SANITARY SEWER, SS FORCEMAIN, WATER LINE, UNDERGROUND POWER, UNDERGROUND FIBER OPTIC, UNDERGROUND TELEPHONE, UNDERGROUND TELEVISION, OVERHEAD ELECTRIC, OVERHEAD FIBER OPTIC, OVERHEAD TELEPHONE, OVERHEAD TELEVISION, VEGETATION LINE, EDGE OF GRAVEL, EDGE OF ASPHALT, CURB/CONCRETE LINE, DITCH FLOWLINE, EXISTING FENCE, TOP/TOE OF SLOPE, RAILROAD TRACKS, CENTERLINE, RIGHT OF WAY, EASEMENT LINE, PROPERTY LINE, PROPOSED WATERLINE, PROPOSED METER LINE, RECLAIMED WATER LINE, FOG LINE, SHUTOFF DETAIL LINES.

HATCHING

Table with columns: DESCRIPTION, LAYER. Includes hatching patterns for ASPHALT - SOLID, GRAVEL - AR-SAND, 0', SCALE=1.6667, CONCRETE - AR-CONC, 0', SCALE=1.6667, WETLAND - GRASS, 0', SCALE=.10 OF DWG SCALE, ASPHALT - SOLID.

Table with columns: ISSUE, REVISIONS, BY, DATE. Includes revision 1: ISSUED FOR BIDDING.



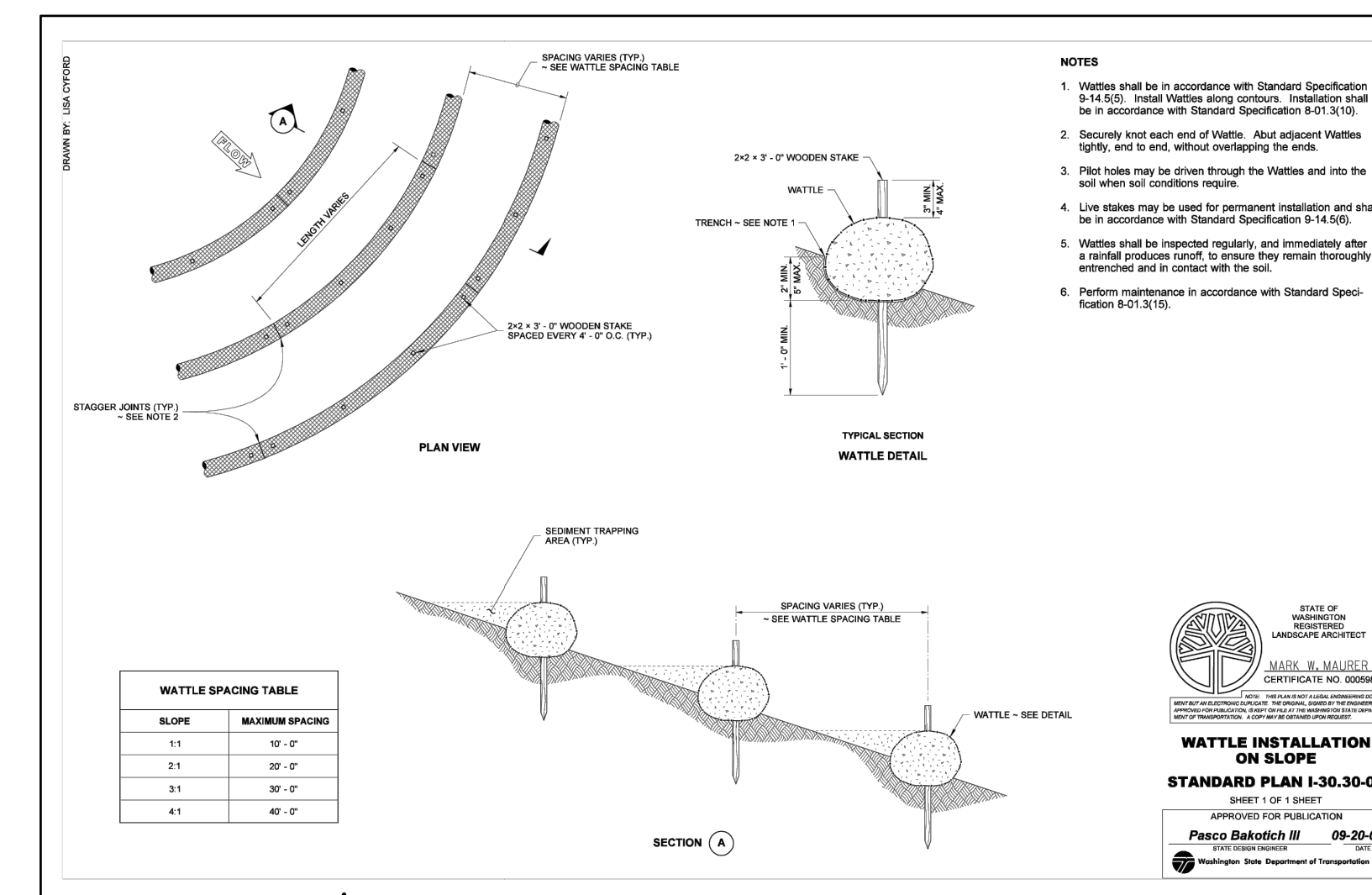
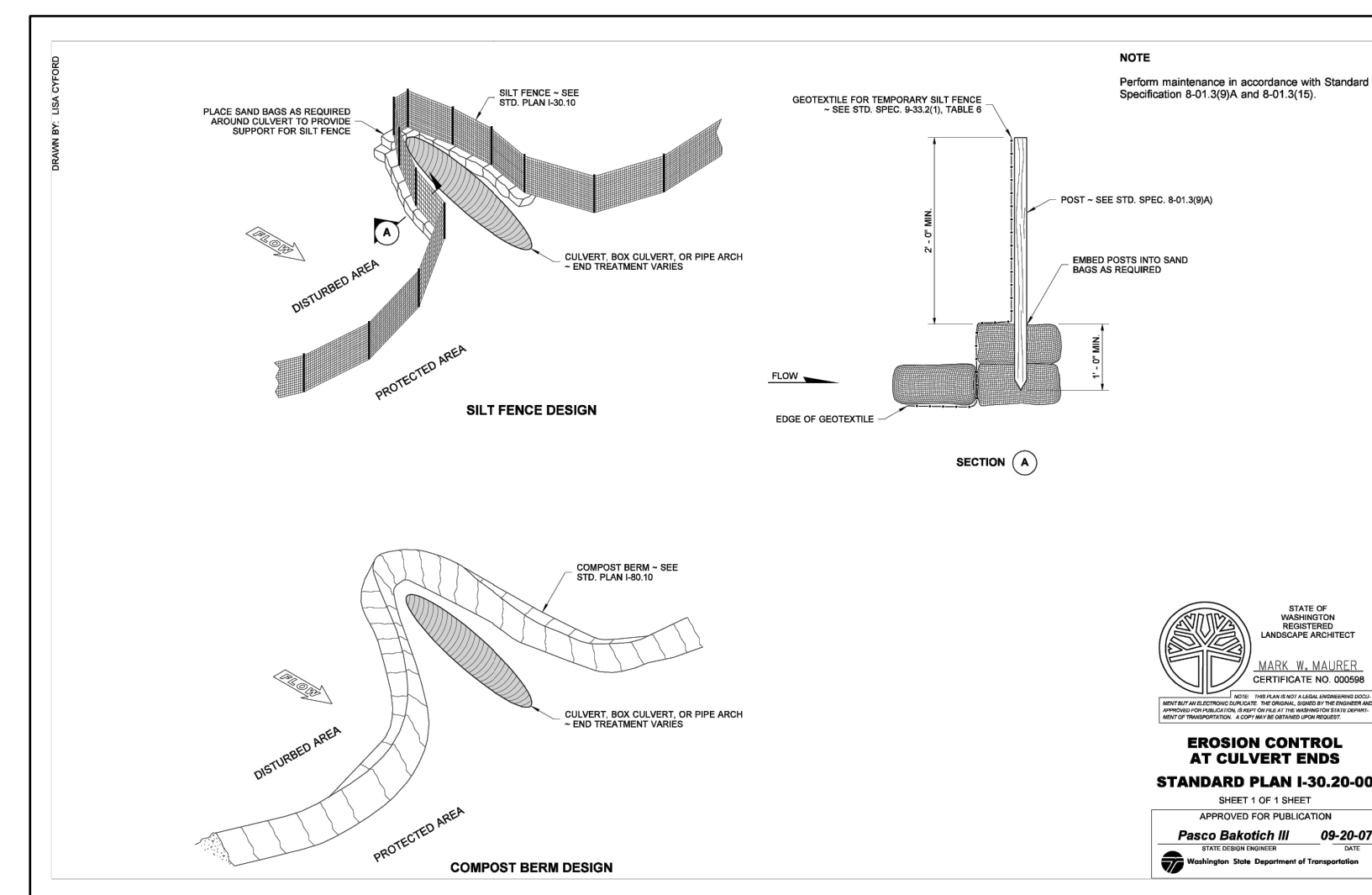
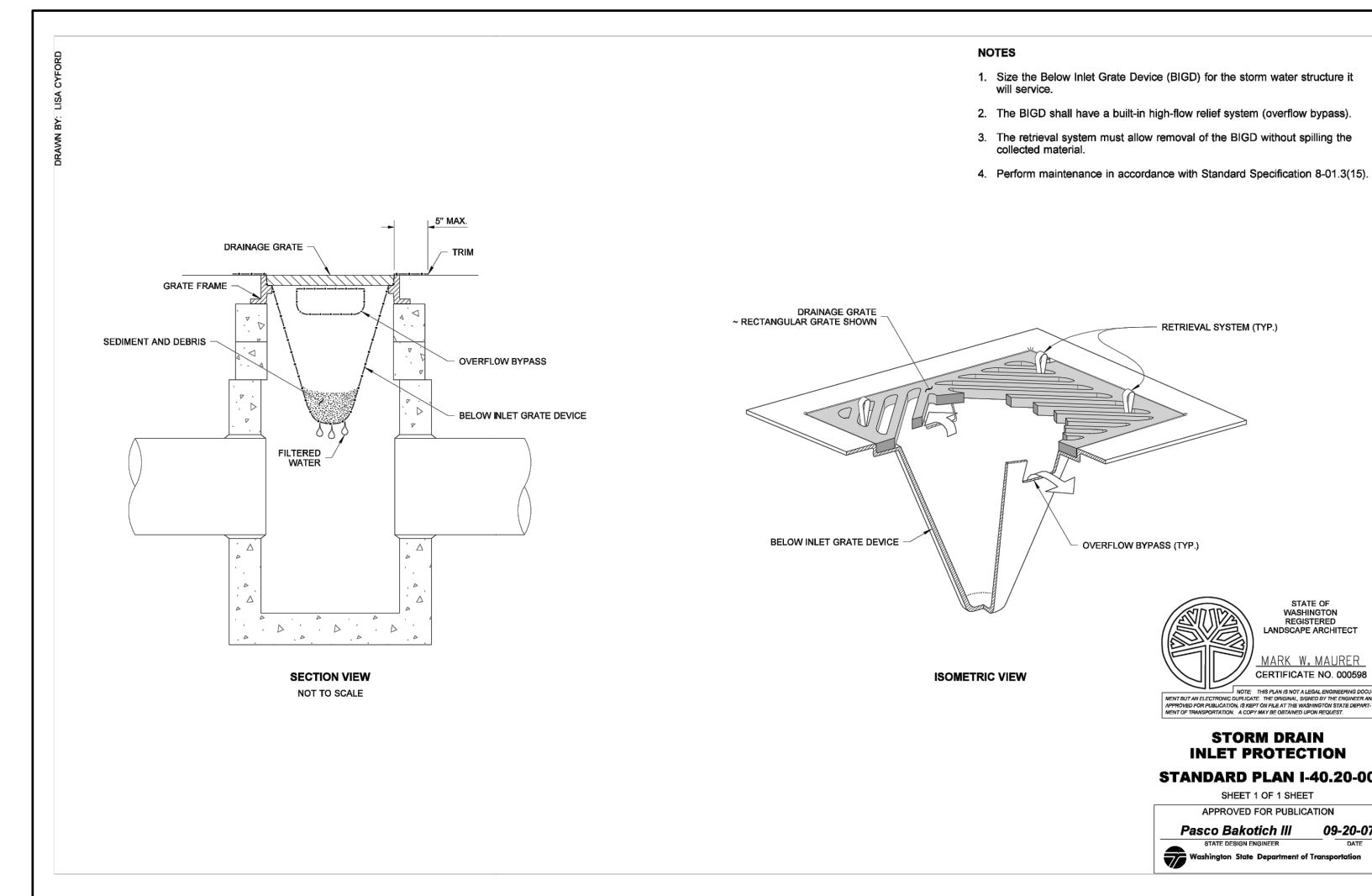
Table with columns: DATUM, DSGN BY, DWN BY, APPVD BY, DATE PRINTED, SEC, TWP, RGE. Includes values for NAD 83, NAVD 88, JLB, MCH, 6/28/24, 17.18, 34 N, 4 E.

Skagit PUD PUBLIC UTILITY DISTRICT NO. 1 of SKAGIT COUNTY. Address: 1415 Freeway Drive, P.O. BOX 1436, Mount Vernon, WA 98273. Phone: (360) 424-7104. Website: www.SkagitPud.org.

FIBER OPTIC CAMPUS TO WTP: BNSF RR CROSSING LEGEND. SCALE: 1"=20'. JOB ID: CP19390. SHEET: 1 OF 4.

Standard ESC Plan Notes

- AS DIRECTED BY PUBLIC WORKS DIRECTOR PRIOR TO COMMENCING CONSTRUCTION, ALL CRITICAL AREAS, INCLUDING WETLAND BUFFERS, STREAM CORRIDOR, LANDFILL AREAS, AND STEEP SLOPES SHALL BE CONTINUOUSLY DEMARCATED IN THE FIELD USING FLAGGING TAPE OR FENCING.
- EROSION CONTROL METHODS AND MATERIALS SHALL MEET REQUIREMENTS OF SECTION 8-01 OF THE APWA/WASHINGTON STATE DEPARTMENT OF TRANSPORTATION 2023 STANDARD SPECIFICATIONS FOR ROAD, BRIDGE, AND MUNICIPAL CONSTRUCTION, AND REQUIREMENTS SET FORTH IN VOLUME II OF THE "STORMWATER MANAGEMENT MANUAL FOR THE PUGET SOUND BASIN (THE TECHNICAL MANUAL)", BY THE WASHINGTON STATE DEPARTMENT OF ECOLOGY, CURRENT EDITION. THE CONTRACTOR SHALL FOLLOW RECOMMENDATIONS MADE BY SUPPLIERS AND MANUFACTURERS OF MATERIALS AND EQUIPMENT USED.
- THE ESC FACILITIES SHOWN ON THIS PLAN MUST BE CONSTRUCTED IN CONJUNCTION WITH ALL CLEARING AND GRADING ACTIVITIES IN SUCH A MANNER AS TO ENSURE THAT SEDIMENT-LADEN WATER DOES NOT ENTER THE DRAINAGE SYSTEM OR VIOLATE APPLICABLE WATER STANDARDS, AND MUST BE INSTALLED AND IN OPERATION PRIOR TO ANY GRADING OR LAND CLEARING, WHEREVER POSSIBLE, MAINTAIN NATURAL VEGETATION FOR SILT CONTROL.
- THE ESC FACILITIES SHOWN ON THIS PLAN ARE THE MINIMUM REQUIREMENTS FOR ANTICIPATED SITE CONDITIONS. DURING THE CONSTRUCTION PERIOD, THESE ESC FACILITIES SHALL BE UPGRADED (E.G., ADDITIONAL SUMPS, RELOCATION OF DITCHES AND SILT FENCES, ETC.) AS NEEDED FOR UNEXPECTED STORM EVENTS. ADDITIONALLY, MORE ESC FACILITIES MAY BE REQUIRED TO ENSURE COMPLETE SILTATION CONTROL. THEREFORE, DURING THE COURSE OF CONSTRUCTION, IT SHALL BE THE OBLIGATION AND RESPONSIBILITY OF THE CONTRACTOR TO ADDRESS ANY NEW CONDITIONS THAT MAY BE CREATED BY HIS ACTIVITIES AND TO PROVIDE ADDITIONAL FACILITIES OVER AND ABOVE THE MINIMUM REQUIREMENTS AS MAY BE NEEDED.
- ANY PERMANENT RETENTION/DETENTION FACILITY USED AS A TEMPORARY SETTLING BASIN SHALL BE MODIFIED WITH THE NECESSARY EROSION CONTROL MEASURES AND SHALL PROVIDE ADEQUATE STORAGE CAPACITY. IF THE PERMANENT FACILITY IS TO FUNCTION ULTIMATELY AS AN INFILTRATION OR DISPERSION SYSTEM, THE FACILITY SHALL NOT BE USED AS A TEMPORARY SETTLING BASIN. NO UNDERGROUND DETENTION TANK, DETENTION VAULT, OR SYSTEM, WHICH BACKS UNDER OR INTO A POND, SHALL BE USED AS A TEMPORARY SETTLING BASIN.
- WHERE SEEDING FOR TEMPORARY EROSION CONTROL IS REQUIRED, FAST GERMINATING GRASSES SHALL BE APPLIED AT AN APPROPRIATE RATE (EXAMPLE: ANNUAL OR PERENNIAL RYE APPLIED AT APPROXIMATELY 80 POUNDS PER ACRE).
- WHERE STRAW MULCH IS REQUIRED FOR TEMPORARY EROSION CONTROL, IT SHALL BE APPLIED AT A MINIMUM THICKNESS OF TWO (2) INCHES.
- ALL WORK AND MATERIALS SHALL BE IN ACCORDANCE WITH SPECIFICATIONS OF THE CITY OR COUNTY IN WHICH THE WORK OCCURS.
- THE ESC FACILITIES SHALL BE CONSTRUCTED IN ACCORDANCE WITH THE DETAILS ON THE APPROVED PLANS. LOCATIONS MAY BE MOVED TO SUIT FIELD CONDITIONS, SUBJECT TO APPROVAL.
- A COPY OF THE APPROVED EROSION CONTROL PLANS MUST BE ON THE JOB SITE WHENEVER CONSTRUCTION IS IN PROGRESS.
- OFF-SITE STREETS MUST BE KEPT CLEAN AT ALL TIMES. IF DIRT IS DEPOSITED ON THE PUBLIC STREET SYSTEM, THE STREET SHALL BE IMMEDIATELY CLEANED WITH POWER SWEEPER OR OTHER EQUIPMENT. ALL VEHICLES SHALL LEAVE THE SITE BY WAY OF THE CONSTRUCTION ENTRANCE AND SHALL BE CLEANED OF ALL DIRT THAT WOULD BE DEPOSITED ON THE PUBLIC STREETS.
- ANY CATCH BASINS COLLECTING RUNOFF FROM THE SITE, WHETHER THEY ARE ON OR OFF THE SITE, SHALL HAVE THEIR GRATES COVERED WITH FILTER FABRIC DURING CONSTRUCTION.
- THE WASHED GRAVEL BACKFILL ADJACENT TO THE FILTER FABRIC FENCE SHALL BE REPLACED AND THE FILTER FABRIC CLEANED IF IT IS NONFUNCTIONAL BY EXCESSIVE SILT ACCUMULATION, ALL INTERCEPTOR SWALES SHALL BE CLEANED IF SILT ACCUMULATION EXCEEDS ONE-QUARTER DEPTH.
- ROCK FOR EROSION PROTECTION OF ROADWAY DITCHES, WHERE REQUIRED, MUST BE OF SOUND QUARRY ROCK, PLACED TO DEPTH OF ONE (1) FOOT AND MUST MEET THE FOLLOWING SPECIFICATIONS: 4" - 8" ROCK/40%-70% PASSING; 2"-4" ROCK/30%-40% PASSING; AND 1"-2" ROCK/10%-20% PASSING.
- IF ANY PART (S) OF THE CLEARING LIMIT; BOUNDARY OR TEMPORARY EROSION/SEDIMENTATION CONTROL PLAN IS/ARE DAMAGED, IT SHALL BE REPAIRED IMMEDIATELY.
- ALL PROPERTIES ADJACENT TO THE PROJECT SITE SHALL BE PROTECTED FROM SEDIMENT DEPOSITION AND RUNOFF. DO NOT FLUSH CONCRETE BY-PRODUCTS OR TRUCKS NEAR OR INTO THE STORM DRAINAGE SYSTEM. IF EXPOSED AGGREGATE IS FLUSHED INTO THE STORM SYSTEM, IT COULD MEAN RECLEANING THE ENTIRE DOWNSTREAM STORM SYSTEM, OR POSSIBLY RELAYING THE STORM LINE.
- THE IMPLEMENTATION OF THESE ESC PLANS AND THE CONSTRUCTION, MAINTENANCE, REPLACEMENT, AND UPGRADING OF THESE FACILITIES IS THE RESPONSIBILITY OF THE APPLICANT/ESC SUPERVISOR UNTIL ALL CONSTRUCTION IS APPROVED.
- THE ESC LEAD'S NAME IS: _____
- THE APPLICANT'S NAME IS: PUD NO. 1 OF SKAGIT COUNTY, 24 HR. CONTACT NUMBER: 360-424-7104. TRANSFEREE IS: _____
- THE ESC FACILITIES SHALL BE INSPECTED DAILY BY THE TRANSFEREE/ESC LEAD AND MAINTAINED TO ENSURE CONTINUED PROPER FUNCTIONING. WRITTEN RECORDS SHALL BE KEPT OF WEEKLY REVIEWS OF THE ESC FACILITIES DURING THE WET SEASON (OCT. 1 TO APRIL 30) AND OF THE MONTHLY REVIEWS DURING THE DRY SEASON (MAY 1 TO SEPT. 30).
- ANY AREAS OF EXPOSED SOILS, INCLUDING ROADWAY EMBANKMENTS, THAT WILL NOT BE DISTURBED FOR TWO DAYS DURING THE WET SEASON OR SEVEN DAYS DURING THE DRY SEASON SHALL BE IMMEDIATELY STABILIZED WITH THE APPROVED ESC METHODS (E.G., SEEDING, MULCHING, PLASTIC COVERING, ETC.).
- ANY AREA NEEDING ESC MEASURES NOT REQUIRING IMMEDIATE ATTENTION SHALL BE ADDRESSED WITHIN FIFTEEN (15) DAYS.
- THE ESC FACILITIES ON ACTIVE SITES SHALL BE INSPECTED AND MAINTAINED A MINIMUM OF ONCE A MONTH OR WITHIN FORTY-EIGHT (48) HOURS FOLLOWING A STORM EVENT.
- AT NO TIME SHALL MORE THAN ONE (1) FOOT OF SEDIMENT BE ALLOWED TO ACCUMULATE WITHIN A CATCH BASIN. ALL CATCH BASINS AND CONVEYANCE LINES SHALL BE CLEANED PRIOR TO PAVING. THE CLEANING OPERATION SHALL NOT FLUSH SEDIMENT-LADEN WATER INTO THE DOWNSTREAM SYSTEM.
- STABILIZED CONSTRUCTION ENTRANCES AND ROADS SHALL BE INSTALLED AT THE BEGINNING OF CONSTRUCTION AND MAINTAINED FOR THE DURATION OF THE PROJECT. ADDITIONAL MEASURES, SUCH AS WASH PADS, MAY BE REQUIRED TO ENSURE THAT ALL PAVED AREAS ARE KEPT CLEAN FOR THE DURATION OF THE PROJECT.
- ANY PERMANENT FLOW CONTROL FACILITY USED AS A TEMPORARY SETTLING BASIN SHALL BE MODIFIED WITH THE NECESSARY EROSION CONTROL MEASURES AND SHALL PROVIDE ADEQUATE STORAGE CAPACITY. IF THE FACILITY IS TO FUNCTION AS ULTIMATELY AS AN INFILTRATION SYSTEM, THE TEMPORARY FACILITY MUST BE GRADED SO THAT THE BOTTOM AND SIDES ARE AT LEAST THREE FEET ABOVE THE FINAL GRADE OF THE PERMANENT FACILITY.
- PRIOR TO THE BEGINNING OF THE WET SEASON (OCT. 1), ALL DISTURBED AREAS SHALL BE REVIEWED TO IDENTIFY WHICH ONES CAN BE SEEDED IN PREPARATION FOR THE WINTER RAINS. DISTURBED AREAS SHALL BE SEEDED WITHIN ONE WEEK OF THE BEGINNING OF THE WET SEASON. A SKETCH MAP OF THOSE AREAS TO BE SEEDED AND THOSE AREAS TO REMAIN UNCOVERED SHALL BE SUBMITTED TO THE CITY INSPECTOR. THE CITY INSPECTOR CAN REQUIRE SEEDING OF ADDITIONAL AREAS IN ORDER TO PROTECT SURFACE WATERS, ADJACENT PROPERTIES, OR DRAINAGE FACILITIES.
- CONTRACTOR SHALL MAINTAIN ALL BMP'S UNTIL DISTURBED AREAS HAVE STABILIZED.



ISSUE	REVISIONS	BY	DATE
1.	ISSUED FOR BIDDING	MCH	6/28/24



DATUM:
HOR: NAD 83
VERT: NAVD 88

DSGN BY: JLB
DWN BY: JLB
APPVD BY: MCH

DATE PRINTED: 6/28/24
SEC: 17.18
TWP: 34 N
RGE: 4 E



PUBLIC UTILITY DISTRICT
NO. 1 of SKAGIT COUNTY
1415 Freeway Drive
P.O. BOX 1436
Mount Vernon, WA 98273
(360) 424-7104
www.SkagitPud.org

FIBER OPTIC CAMPUS TO WTP:
BNSF RR CROSSING
BMP AND STORM DETAILS

SCALE: NONE JOB ID : CP19390 SHEET: 2 OF 4

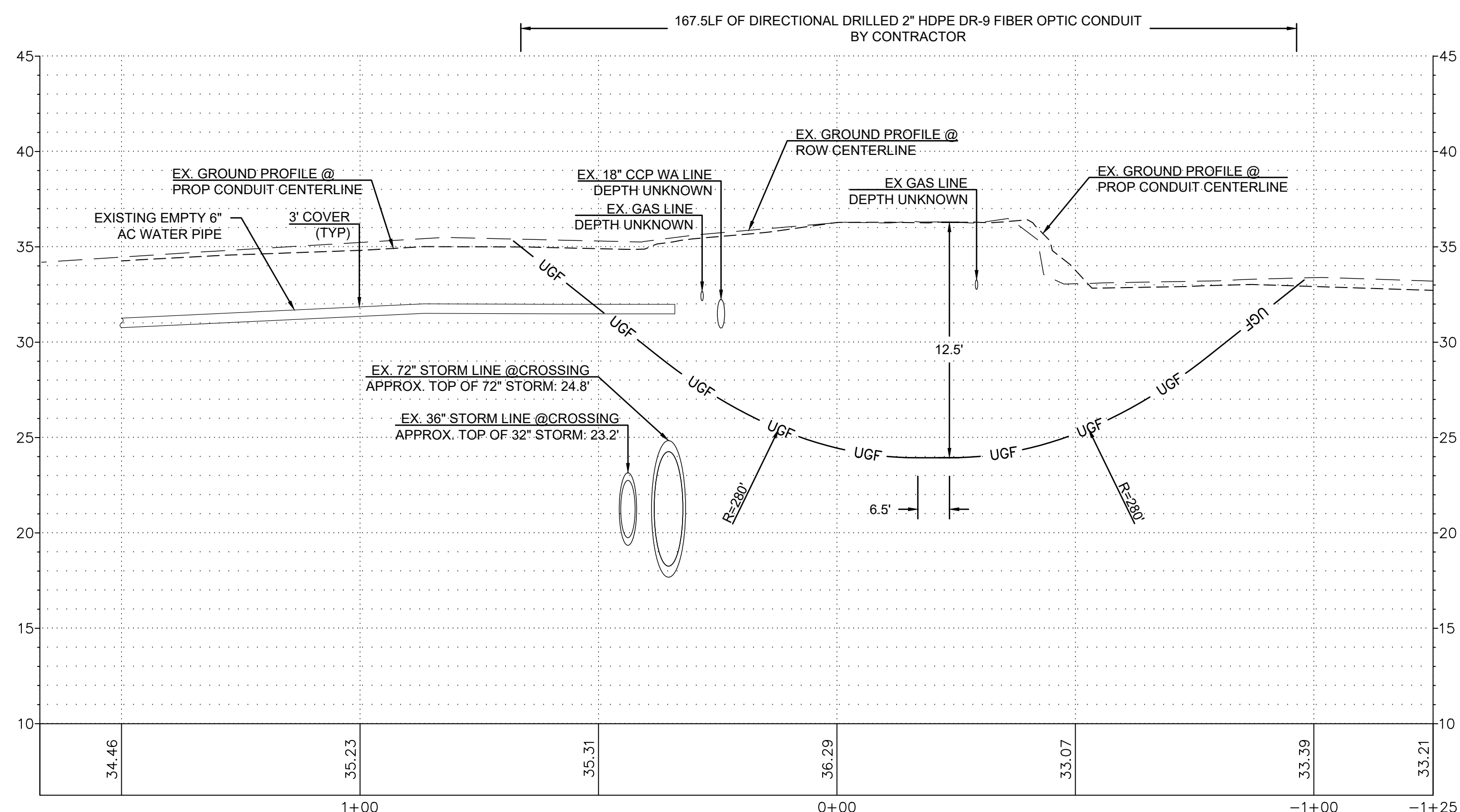
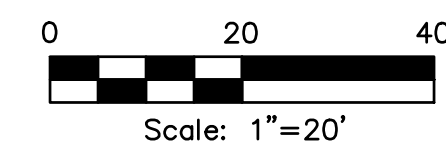
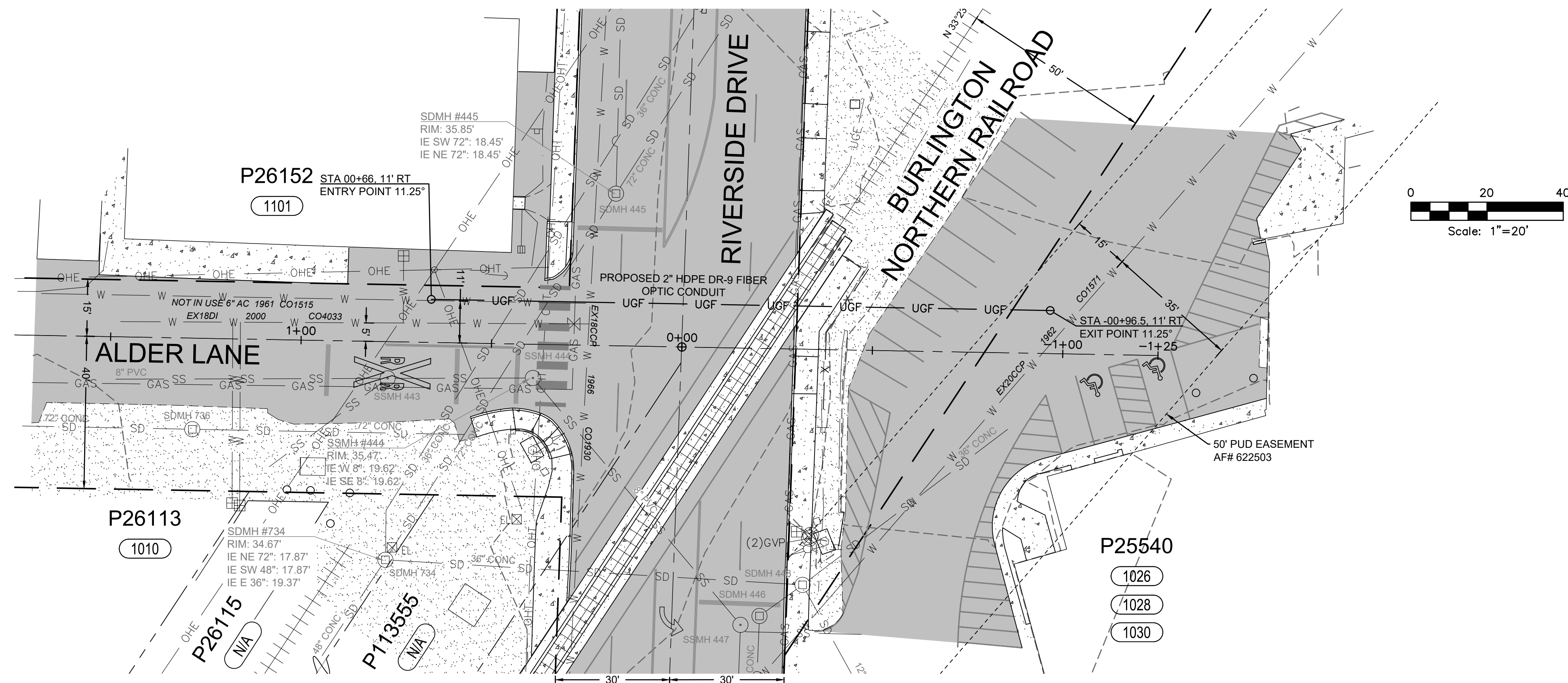
DISTRICT STANDARD GENERAL NOTES

(Minimum Requirements)

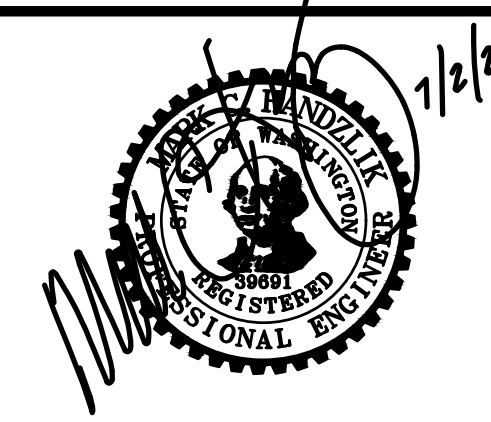
- UNLESS STATED OTHERWISE, ALL WORK IS TO BE PERFORMED IN ACCORDANCE WITH THE MOST CURRENT WASHINGTON STATE DEPARTMENT OF TRANSPORTATION (WSDOT) STANDARD SPECIFICATIONS FOR ROAD, BRIDGE AND MUNICIPAL CONSTRUCTION AND THE DISTRICT REQUIREMENTS AS OUTLINED IN THE DISTRICT'S WATER POLICY MANUAL.
- THE CONTRACTOR SHALL SCHEDULE A PRE-CONSTRUCTION CONFERENCE WITH THE DISTRICT ENGINEERING DEPARTMENT, (360) 424-7104, A MINIMUM OF 48 HOURS PRIOR TO CONSTRUCTION.
- PERMITS FOR THE INSTALLATION OF THE IMPROVEMENTS ARE ATTACHED IN APPENDIX B OF THE TECHNICAL SPECIFICATIONS.
- DISTRICT REFERENCE DOCUMENTS, SUCH AS STANDARD DETAILS, WATER POLICY MANUAL, DRAWING STANDARDS, ETC., CAN BE FOUND ON THE DISTRICT WEBSITE AT WWW.SKAGITPUD.ORG.
- A #10 SOLID COPPER WIRE WITH BLUE INSULATION IS TO BE INSTALLED WITH/AND ATTACHED TO ALL NEW WATER PIPELINES AND SERVICE PIPELINES. REFER TO DISTRICT DETAILS FOR INSTALLATION REQUIREMENTS.
- BACKFILL TRENCHES IN PAVEMENT AREAS WITH PIT-RUN GRAVEL COMPACTED TO AT LEAST 95 PERCENT MINIMUM DENSITY PER WSDOT SPECIFICATION 7-09.3(11). THE CONTRACTOR SHALL MAKE ALL PAVEMENT REPAIRS AND PERFORM ALL RESTORATION.
- ALL SALVAGED USABLE DISTRICT OWNED MATERIALS ARE TO BE DELIVERED TO THE DISTRICT OFFICE AT 1415 FREEWAY DRIVE, MOUNT VERNON, OR AS DIRECTED BY THE DISTRICT.
- THE UTILITY LOCATIONS MARKED ON THIS MAP ARE APPROXIMATE. THE CONTRACTOR IS TO VERIFY ACTUAL LOCATION AND DEPTH PRIOR TO CONSTRUCTION. CALL THE UNDERGROUND UTILITY LOCATE CENTER AT 800- 424-5555.

CONSTRUCTION NOTES

- VERIFY THE LOCATIONS, ELEVATIONS, DIAMETERS, MATERIALS, AND OTHER PARAMETERS OF EXISTING FACILITIES TO WHICH NEW FACILITIES CONNECT BEFORE BEGINNING ANY WORK.
- VERIFY INVERT ELEVATION OF EXISTING UTILITIES.
- PROTECT ALL EXISTING UTILITIES, SERVICE CONNECTIONS AND ALL SURFACE IMPROVEMENTS.
- PROTECT ALL EXISTING UTILITIES AND SURFACE IMPROVEMENTS. CONTRACTORS SHALL COORDINATE WITH PROPERTY OWNERS DURING CONSTRUCTION TO AVOID DAMAGING EXISTING FACILITIES. CONTRACTOR SHALL BE RESPONSIBLE TO IDENTIFY AND LOCATE ALL EXISTING UTILITIES ON PRIVATE PROPERTY.
- CONSTRUCTION ACTIVITIES SHALL NOT EXTEND BEYOND THE LIMITS SHOWN IN THE PLANS WITHOUT PRIOR APPROVAL OF THE ENGINEER.
- CONTRACTOR TO COORDINATE WORK WITH & WITHIN APPROVED TRAFFIC CONTROL PLANS.
- REFER TO EROSION AND SEDIMENTATION CONTROL DRAWINGS FOR PROTECTION REQUIREMENTS.
- CONTRACTOR IS RESPONSIBLE FOR CONSTRUCTING, MAINTAINING AND REMOVING TEMPORARY ACCESS ROADS AND RESTORATION OF CONSTRUCTION AREAS TO PRE-CONSTRUCTION CONDITION OR BETTER.
- PROVIDE AND MAINTAIN TEMPORARY PAVEMENT MARKINGS UNTIL PERMANENT MARKINGS RESTORATION. PROVIDE PERMANENT RESTORATION OF PAVEMENT MARKINGS AFTER PAVEMENT RESTORATION IS COMPLETED.
- SUPPORT POWER AND TELEPHONE POLES DURING PIPELINE INSTALLATION. COORDINATE WITH PUGET SOUND ENERGY TO PROVIDE TEMPORARY GUYS OR SUPPORTS AS NECESSARY.
- EXCESS TRENCH MATERIALS MUST BE HAULED OFF SITE. NO SPOILS SHALL BE SPREAD IN WETLANDS OR WETLAND BUFFERS. NO MATERIALS SHALL BE STOCKPILED IN WETLANDS OR WETLAND BUFFERS.
- REMOVE AND REPLACE ALL MAILBOXES AS REQUIRED FOR CONSTRUCTION.
- REMOVE AND REPLACE ALL TRAFFIC AND ROADWAY SIGNS AS REQUIRED FOR CONSTRUCTION.
- MINIMUM 12-INCH SAND CUSHION IS DESIRED BETWEEN EXISTING PIPELINES OR OTHER CONDUITS WHEN ENCOUNTERED DURING CONSTRUCTION. NOTIFY DISTRICT INSPECTOR IF LESS THAN 12-INCHES OF CUSHION WILL OCCUR.
- TURBID WATER GENERATED FROM CONSTRUCTION ACTIVITIES, INCLUDING TURBID DEWATERING WATER, SHALL NOT BE DISCHARGED DIRECTLY TO ANY SURFACE WATER. TEMPORARY SEDIMENT PONDS OR BAKER TANKS SHALL BE USED, AS NECESSARY, TO ALLOW THE TURBID WATER TO SETTLE BEFORE DISCHARGE. DEWATERED GROUNDWATER CAN BE TREATED USING BAKER TANKS ONSITE OR TREATED AND DISPOSED OFFSITE, UPON APPROVAL OF ENGINEER, AND PER APPLICABLE RULES AND GUIDELINES OF DEPARTMENT OF ECOLOGY AND OTHER REQUIREMENTS OF APPLICABLE JURISDICTIONS.



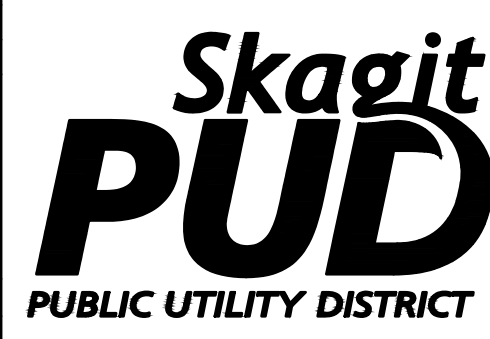
ISSUE	REVISIONS	BY	DATE
1.	ISSUED FOR BIDDING	MCH	6/28/24



DATUM:
HOR: NAD 83
VERT: NAVD 88

DSGN BY: JLB
DWN BY: JLB
APPVD BY: MCH

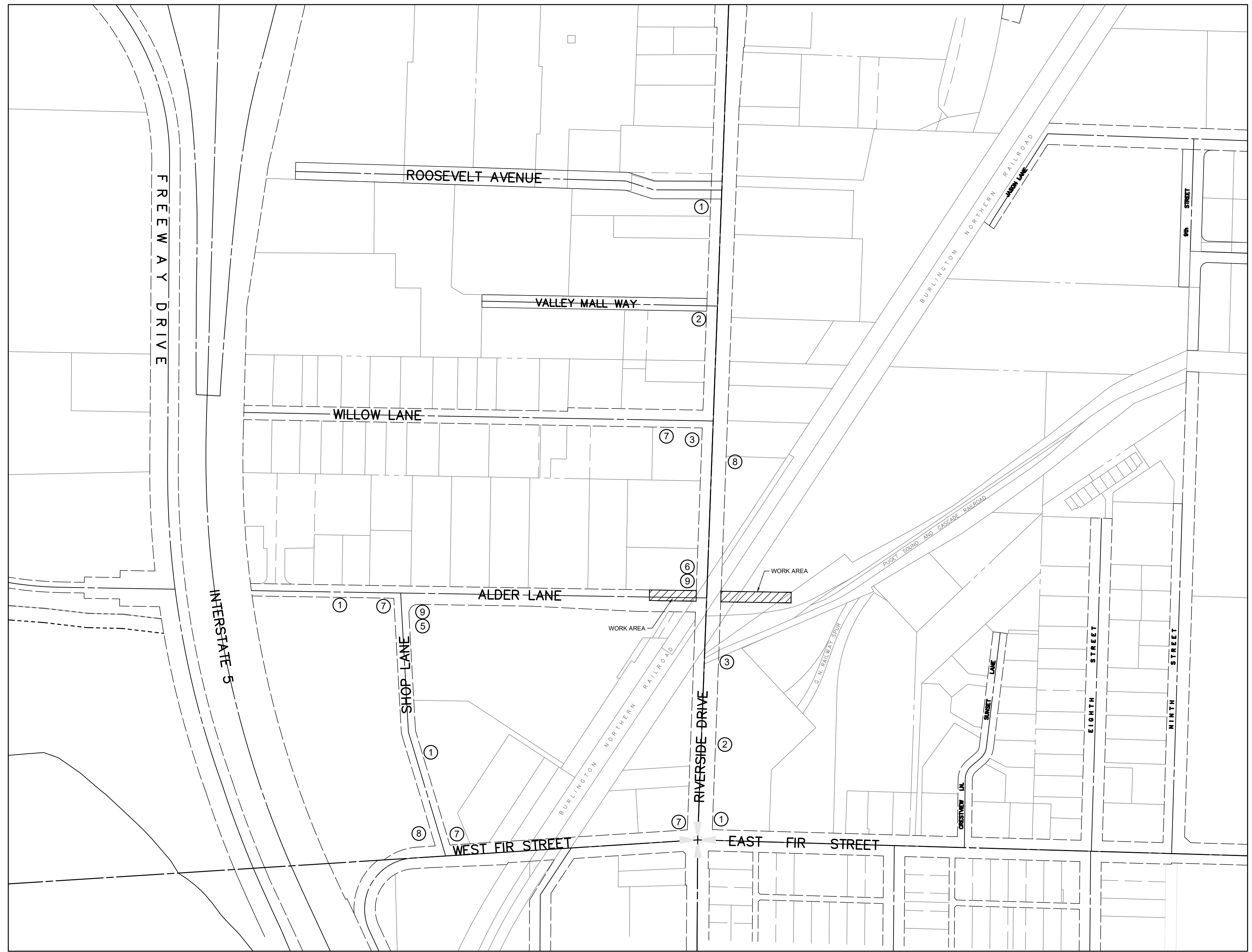
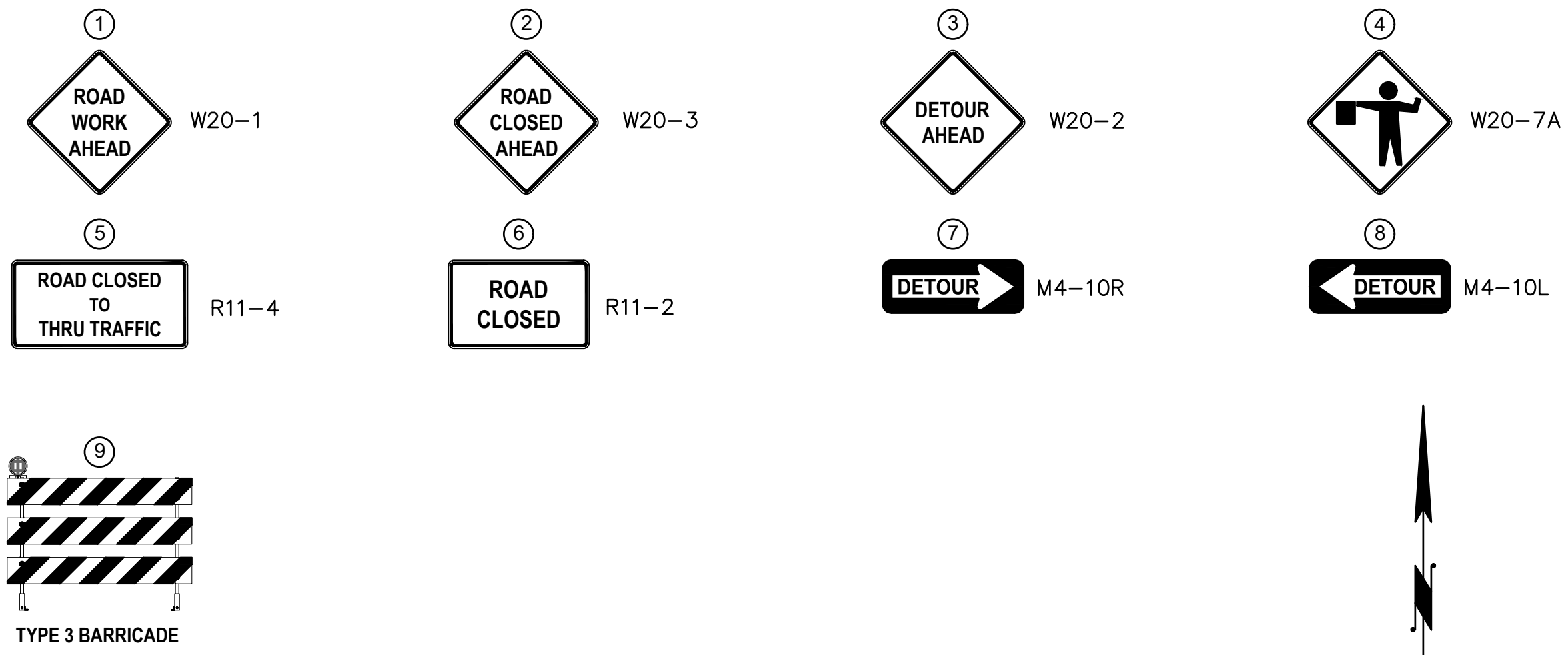
DATE PRINTED: 6/28/24
SEC: 17.18
TWP: 34 N
RGE: 4 E



PUBLIC UTILITY DISTRICT
NO. 1 of SKAGIT COUNTY
1415 Freeway Drive
P.O BOX 1436
Mount Vernon, WA 98273
(360) 424-7104
www.SkagitPud.org

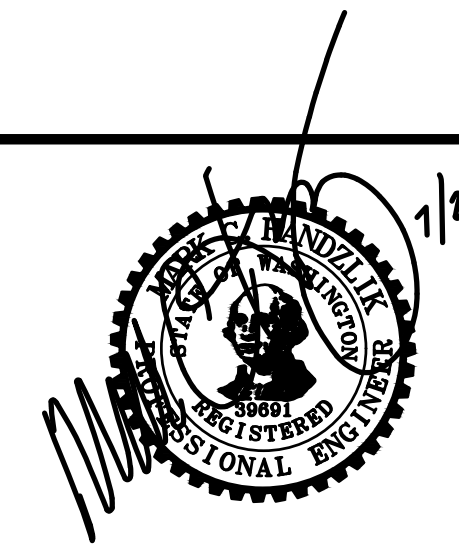
FIBER OPTIC CAMPUS TO WTP:
BNSF RR CROSSING

RR CROSSING BORE
PLAN AND PROFILE
STA -1+25 TO STA 2+00



DETOUR MAP
CLOSING ENTRANCE INTO ALDER LN.

ISSUE	REVISIONS	BY	DATE
1.	ISSUED FOR BIDDING	MCH	6/28/24



DATUM: HOR: NAD 83
 VERT: NAVD 88
 DSGN BY: JLB
 DWN BY: JLB
 APPVD BY: MCH
 DATE PRINTED: 6/28/24
 SEC: 17.18
 TWP: 34 N
 RGE: 4 E



PUBLIC UTILITY DISTRICT
 NO. 1 of SKAGIT COUNTY
 1415 Freeway Drive
 P.O. BOX 1436
 Mount Vernon, WA 98273
 (360) 424-7104
 www.SkagitPud.org

FIBER OPTIC CAMPUS TO WTP:
 BNSF RR CROSSING
 TRAFFIC CONTROL PLAN
 DETOUR MAP